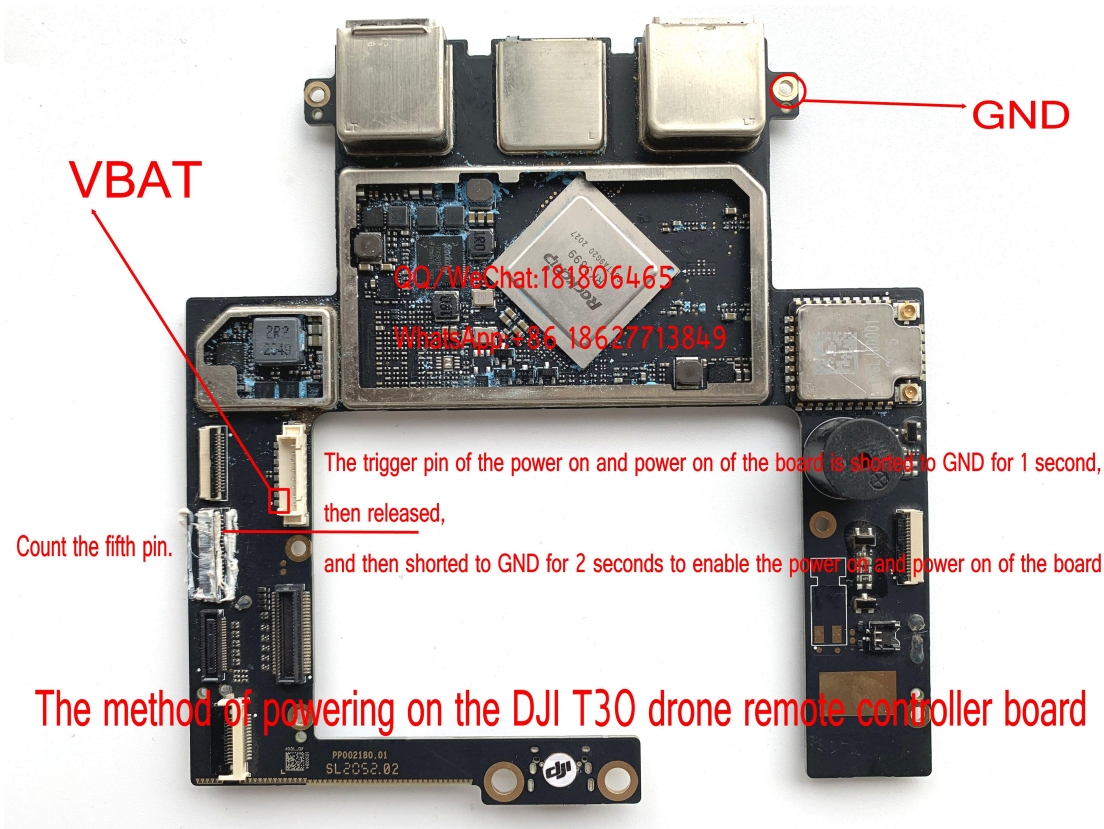


Adjustable regulated power supply+single board power on core motherboard, electronic speed control motherboard, cradle head motherboard, remote control motherboard, flight control board

The boot button or boot trigger circuit of Drone and FPV is integrated in the smart flight battery. As long as the battery is turned on by pressing the boot button, the battery insertion detection foot detects Electronic Speed Control motherboard and the core motherboard will output a battery voltage of about 11.4V. The battery voltage supplies power to the power circuit of the Electronic Speed Control motherboard, the core board, and the cradle head motherboard. The power circuit then depressurizes and outputs various voltages. For example, the flight control board gets the voltage after the voltage is reduced, and the power supply of the flight control board then divides the voltage to supply power to ARM chips, compass, gyroscope, SD card and other components. In other words, any motherboard on the Drone can start to work as long as it gets the main power supply. Manual triggering is required only after the remote control motherboard is powered on.

The remote control is powered by the built-in battery, and the switch is controlled by the start-up button.

Power on the board, as shown in the figure:

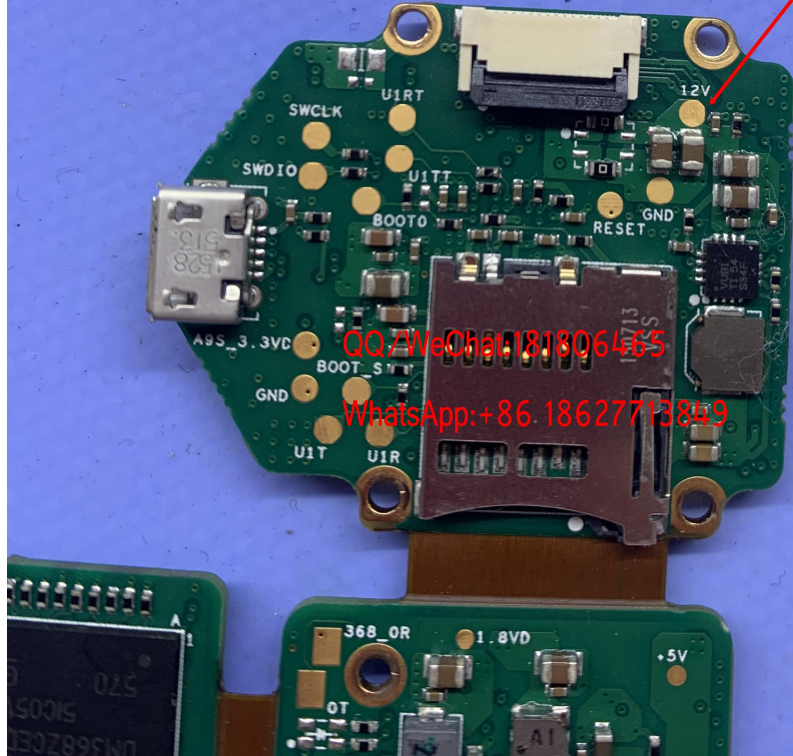


QQ/WeChat: 181806465  
WhatsApp: +86 18627713849  
www.uavfix.tech

Arrow indicates: TP test point.

Communicate with the main power supply VBAT.

If the power is 12V in this position,  
the veneer can be powered on.



After the board is powered on, you can measure the voltage, view the current

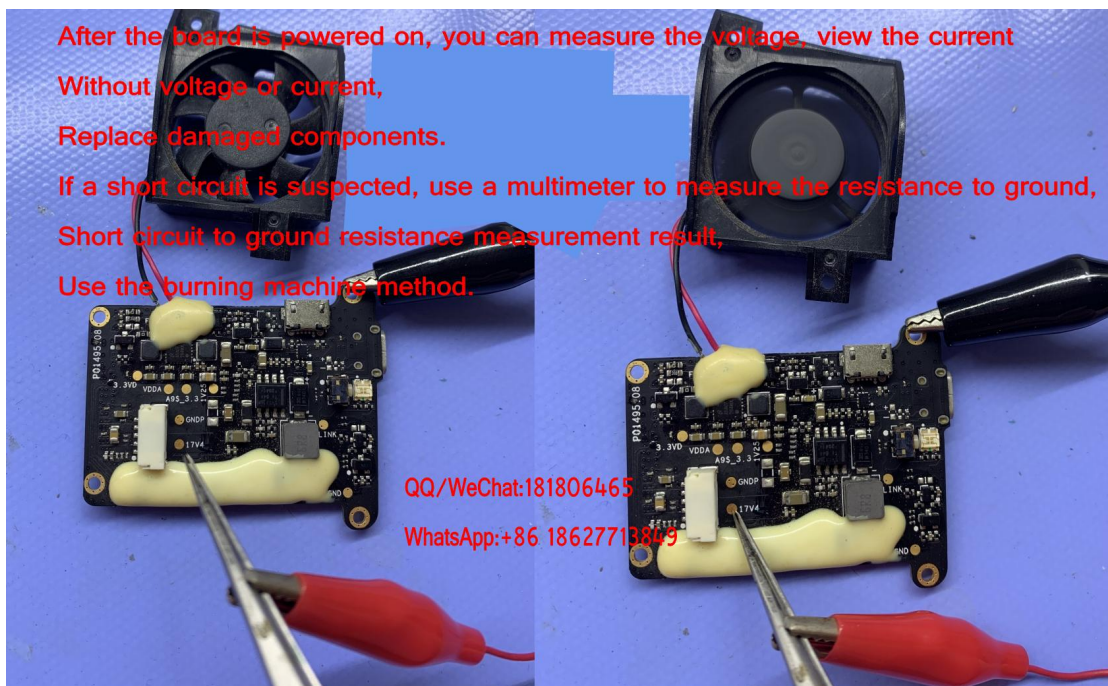
Without voltage or current,

Replace damaged components.

If a short circuit is suspected, use a multimeter to measure the resistance to ground,

Short circuit to ground resistance measurement result,

Use the burning machine method.



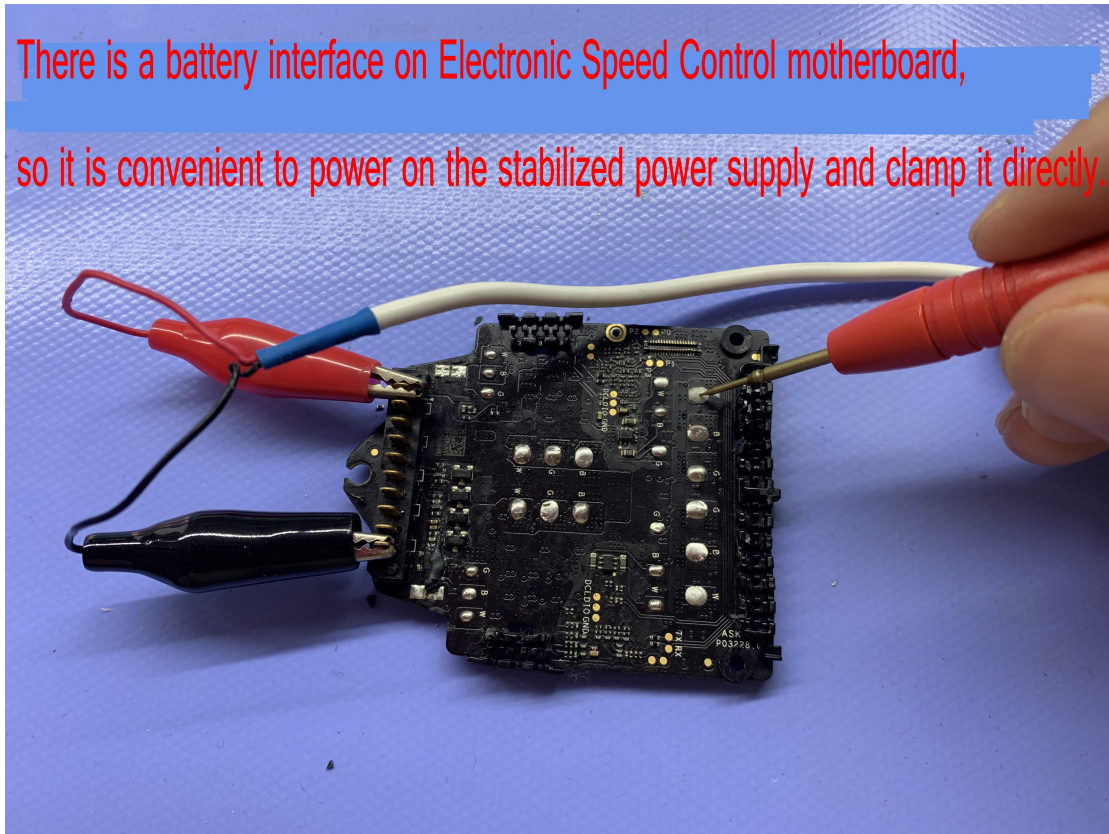
QQ/WeChat: 181806465

WhatsApp: +86 18627713849

www.uavfix.tech



There is a battery interface on Electronic Speed Control motherboard,  
so it is convenient to power on the stabilized power supply and clamp it directly.



What is the battery output voltage,  
Connect the corresponding voltage when the board is powered on.  
As long as the power supply here is about 12V,  
The board can be powered on.

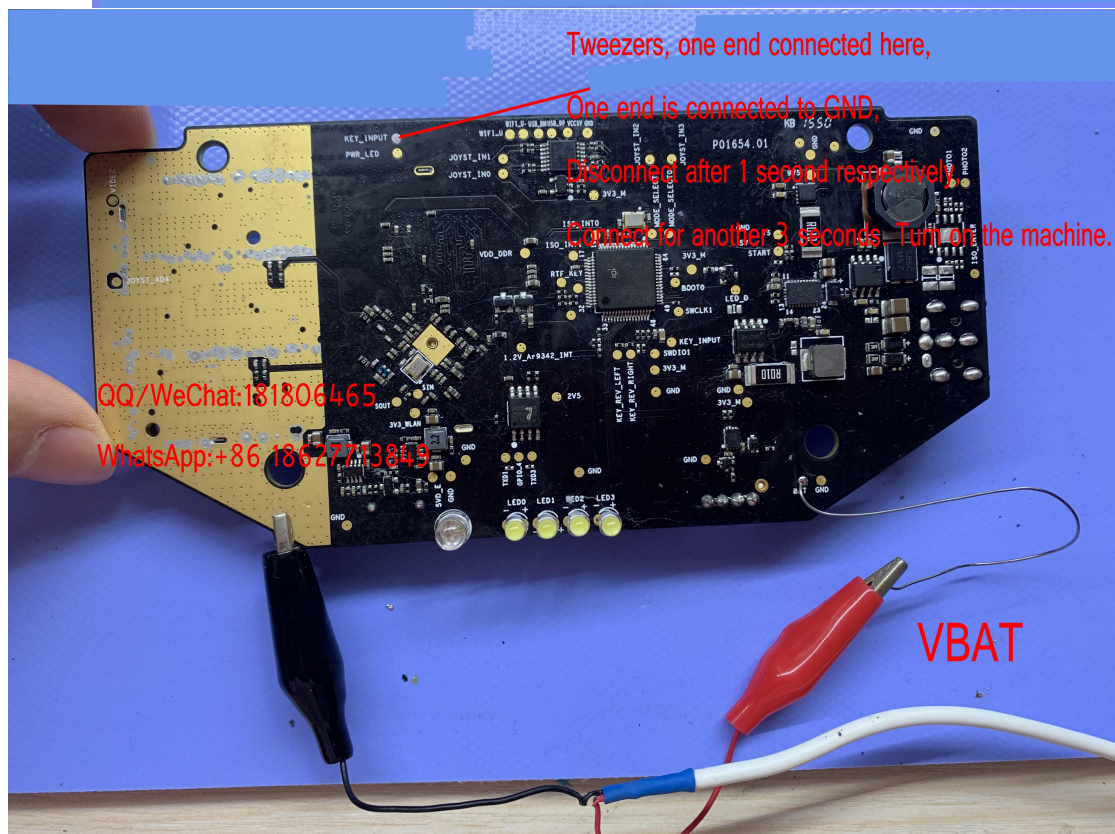
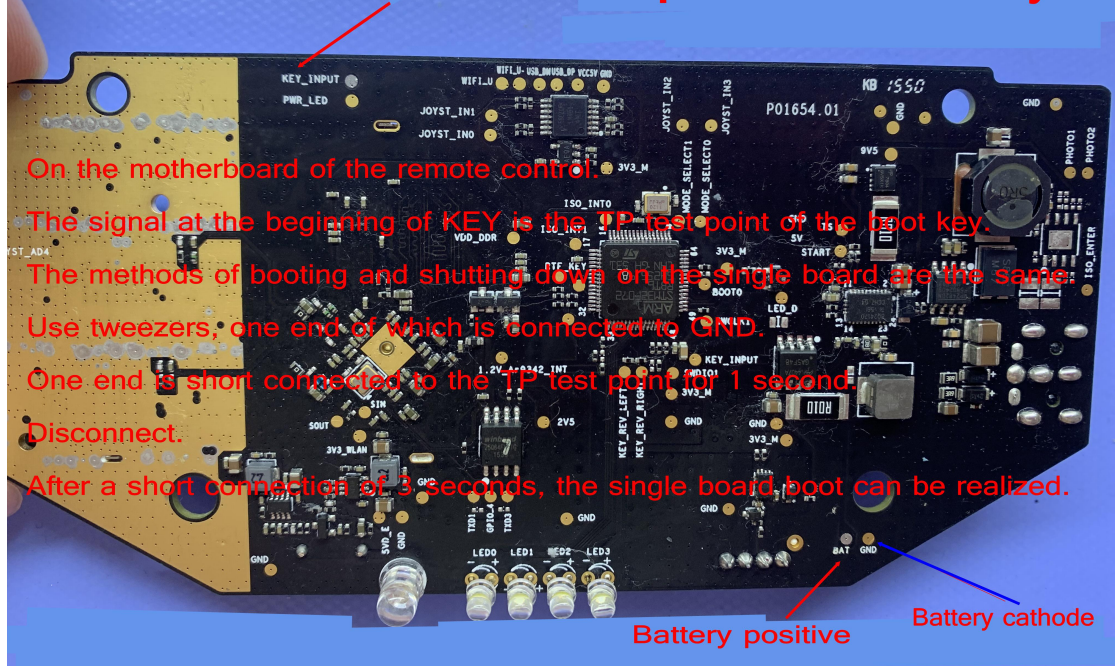


QQ/WeChat: 181806465  
WhatsApp: +86 18627713849

QQ/WeChat: 181806465  
WhatsApp: +86 18627713849  
www.uavfix.tech



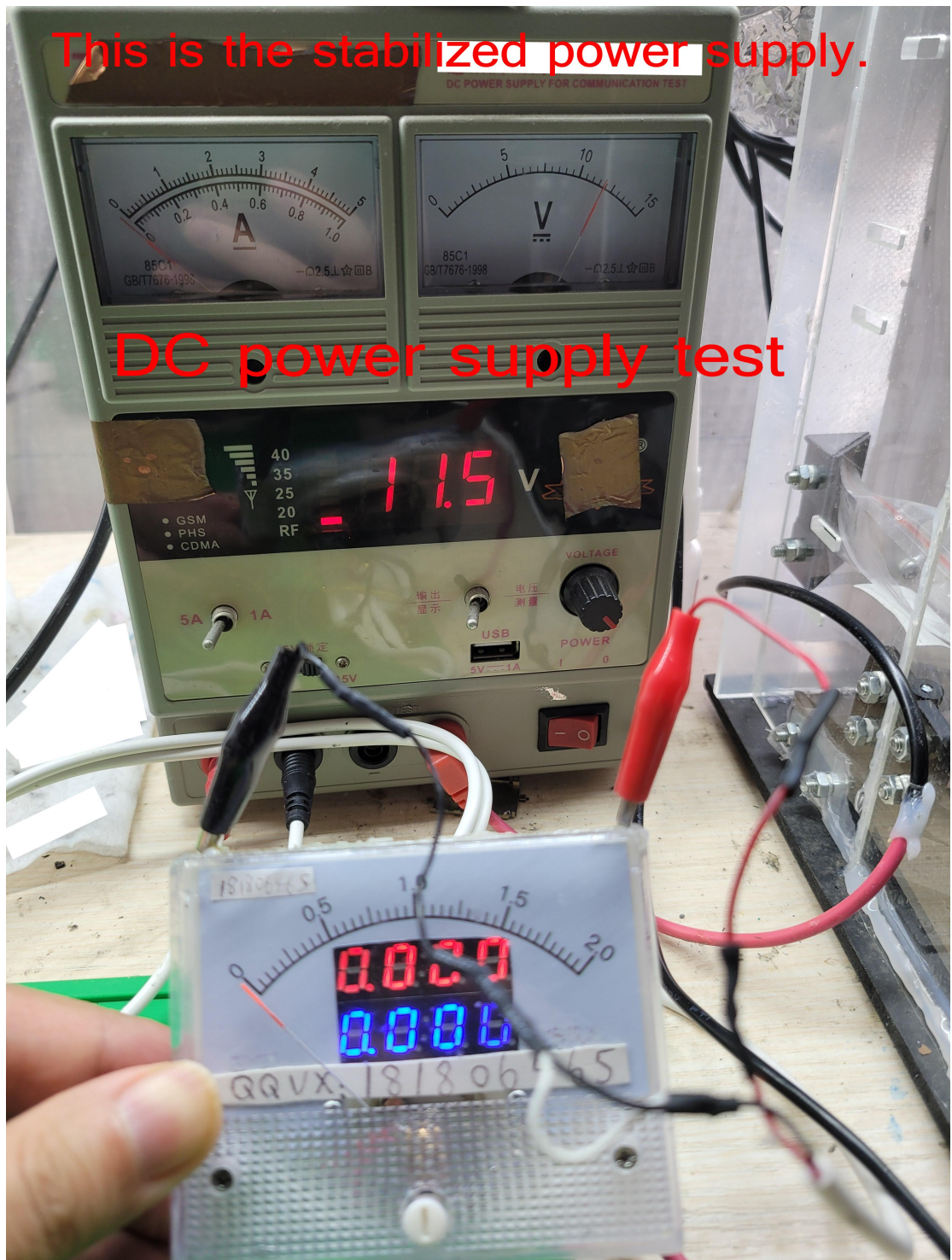
This is the TP of the power on key



It is worth noting that not every main power supply on the motherboard will be marked with VBAT, BAT, VCC, etc., the unmarked need to be judged by measuring the connection between the power supply cable contact and the "TP test point".

QQ/WeChat: 181806465  
 WhatsApp: +86 18627713849  
 www.uavfix.tech





QQ/WeChat: 181806465  
WhatsApp: +86 18627713849  
www.uavfix.tech